

PROPERTY:
**OFFICE/RETAIL/
RESIDENTIAL**

745, 755, 765 Main St.
Belgium, Wisconsin
53004



ANSAY REAL ESTATE

CONTACT:

MARIE HEINEN

Lease Administrator

Direct: 262-376-3276

Cell: 414-507-9710

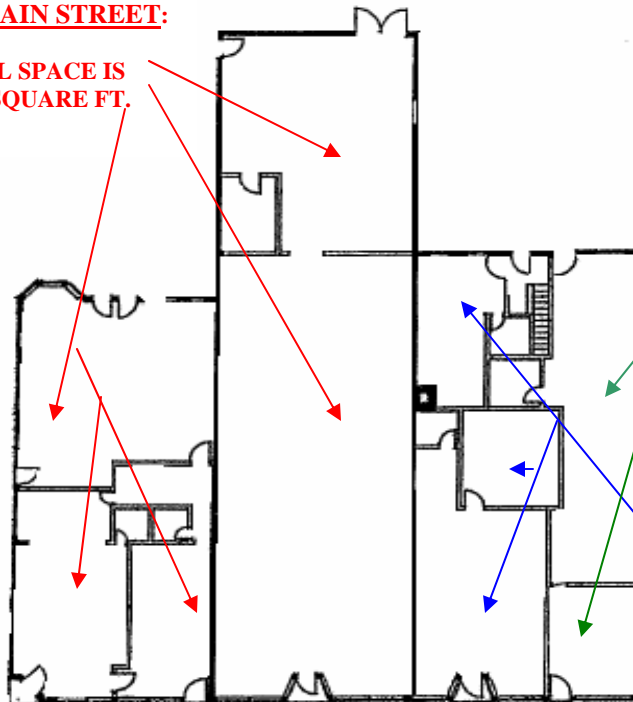
Fax: 262-387-8076

Email:

Marie.Heinen@ansay.com

745 MAIN STREET:

**TOTAL SPACE IS
5,344 SQUARE FT.**



765 MAIN STREET:

**TOTAL SPACE IS
1,106 SQUARE FT.**

755 MAIN STREET:

**TOTAL SPACE IS
1,575 SQUARE FT.**

This turn of the century historic building located in Belgium, Wisconsin is just East of Interstate 43 and five miles west of Highway 57. It is also located close to the Interurban Bike Trail.