

PROPERTY:

351 Main Street # 1
(Lower Unit)
Belgium, Wisconsin
53004



ANSAY REAL ESTATE

CONTACT:

MARIE HEINEN

Lease Administrator

Direct: 262-376-3276

Cell: 414-507-9710

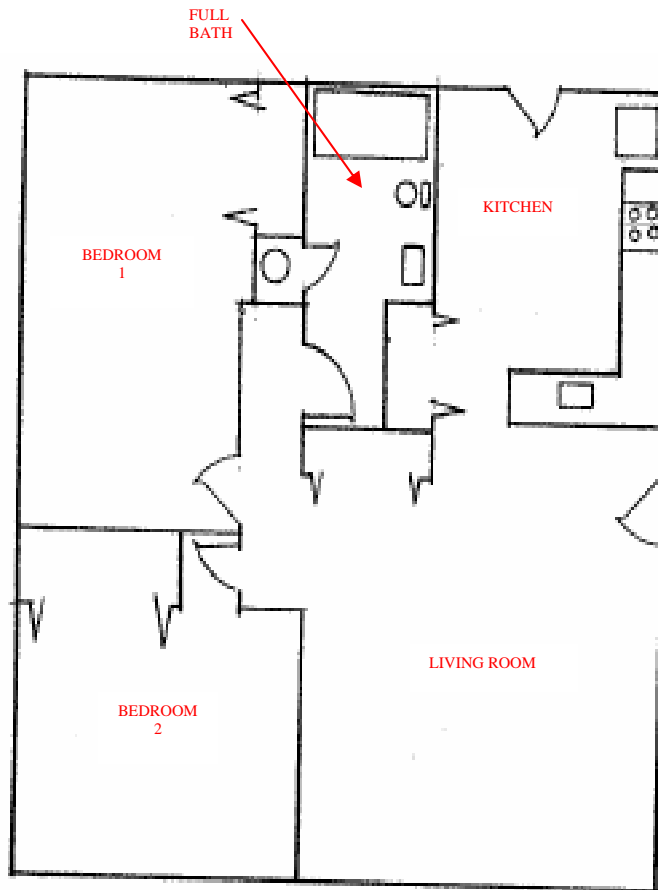
Fax: 262-387-8076

Email:

Marie.Heinen@ansay.com

**PROPERTY AT A
GLANCE:**

- 900 Square Feet
- 2 Bedrooms
- 1 Bath
- Laundry Room
- Kitchen
- A/C Unit
- Coin Laundry
- Stove
- Refrigerator
- Off Street Parking



MEASURES IN FEET:

KITCHEN: 13 X 11

LIVING ROOM: 14 X 16

BEDROOM 1: 11 X 13

BEDROOM 2: 11 X 10

These spacious apartments are within one mile of Interstate 43, two miles east of Lake Michigan, and the Interurban Bike Trail is just to the west. There is something for everyone, whether it is walking on the beach, a round of golf, a bike ride on the trail, or a day of shopping.