

**PROPERTY:**

351 Main Street # 2  
(Lower Unit)  
Belgium, Wisconsin  
53004



**ANSAY REAL ESTATE**

**CONTACT:**

**MARIE HEINEN**  
Lease Administrator

Direct: 262-376-3276  
Cell: 414-507-9710  
Fax: 262-387-8076

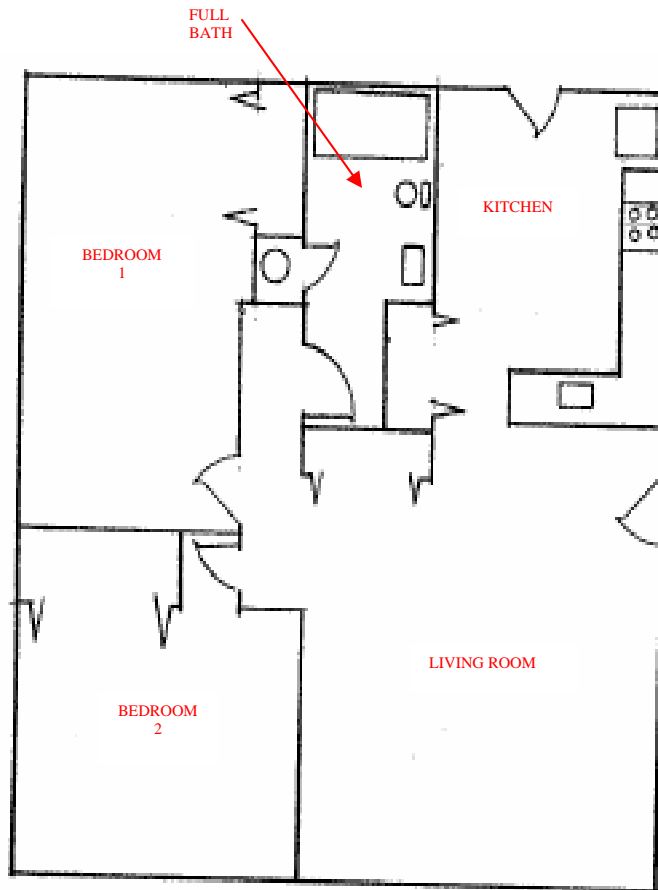
Email:  
Marie.Heinen@ansay.com

**PROPERTY AT A  
GLANCE:**

- 900 Square Feet
- 2 Bedrooms
- 1 Bath
- Laundry Room
- Kitchen
- A/C Unit
- Coin Laundry
- Stove
- Refrigerator
- Off Street Parking

**MEASURES IN FEET:**

**KITCHEN: 13 X 11**  
**LIVING ROOM: 14 X 16**  
**BEDROOM 1: 11 X 13**  
**BEDROOM 2: 11 X 10**



These spacious apartments are within one mile of Interstate 43, two miles east of Lake Michigan, and the Interurban Bike Trail is just to the west. There is something for everyone, whether it is walking on the beach, a round of golf, a bike ride on the trail, or a day of shopping.